

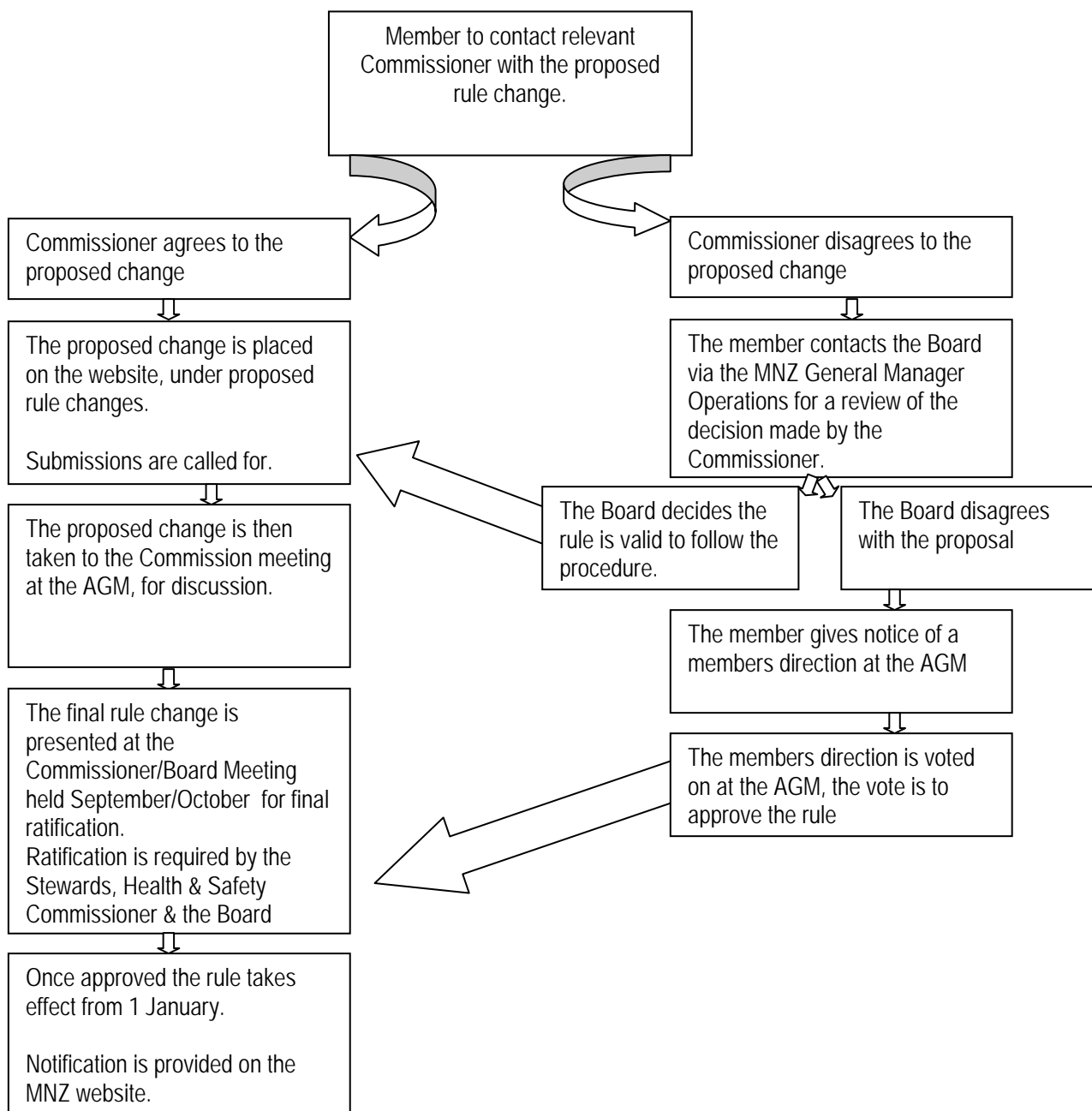


## MOTORCYCLING NEW ZEALAND COMPETITION RULE CHANGE POLICY

Motorcycling New Zealand Board have put in place a rule change policy, this is to explain in a simple form how to make a rule change.

For the purpose of this policy a member is:

Current Competition Licence Holder  
Life & Honorary Member  
Affiliated Clubs  
Current Steward  
Elected members of the Board

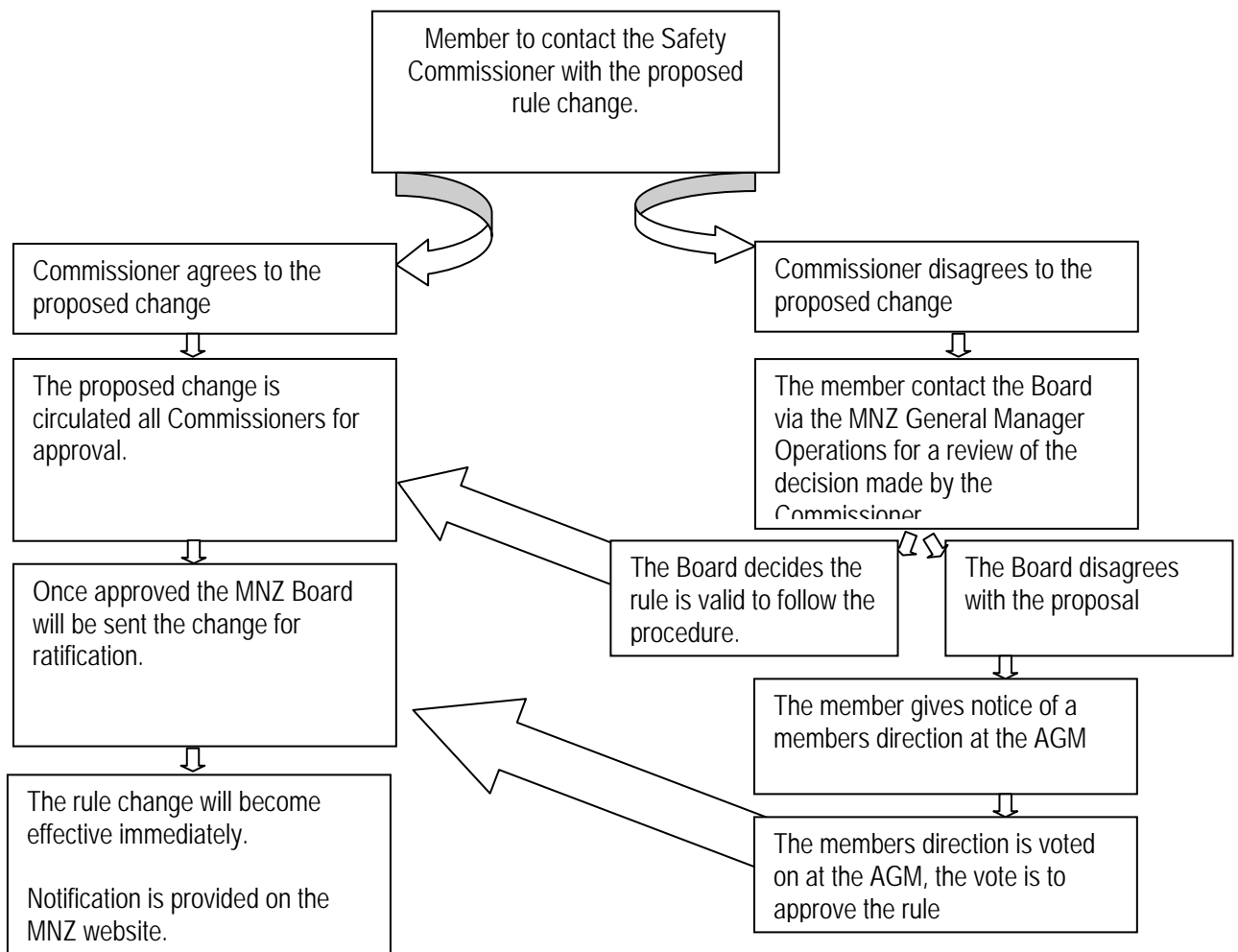


**FOOTNOTE:** The General Manager Operations & Board will review proposed changes to ensure they are operationally possible.

## MOTORCYCLING NEW ZEALAND SAFETY RULE CHANGE POLICY

Motorcycling New Zealand on occasion finds itself in a position where rules are to be changed immediately, the only purpose for this is on a Safety basis.

The process to change a rule for Safety is as follows:



**FOOTNOTE:** The General Manager Operations & Board will review proposed changes to ensure they are operationally possible.